



## **REINFORCED STEEL FRAME (RSF) SOLAR MODULE**

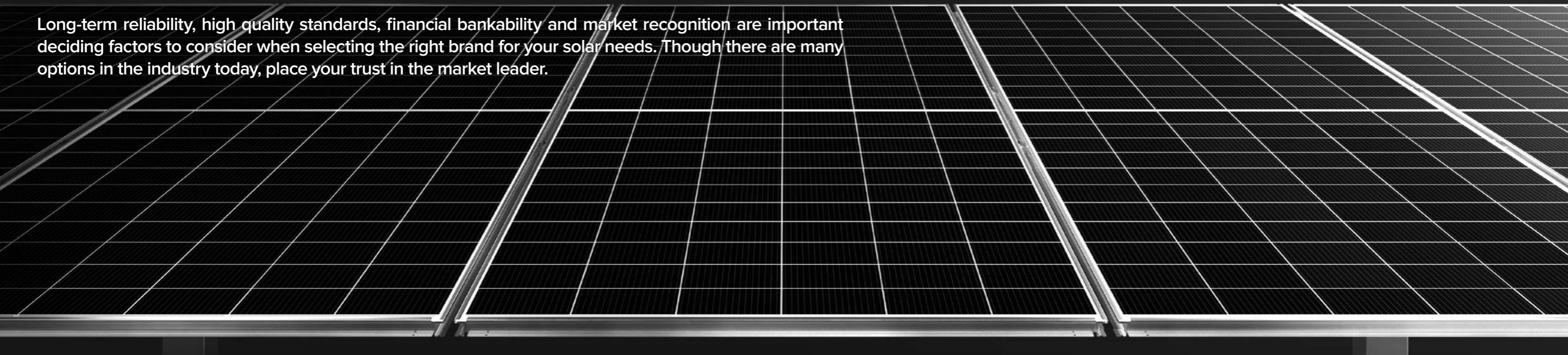
Q.PEAK DUO **RSF** XL-G11S.3/BFG



# THE LEADING COMPLETE ENERGY SOLUTIONS PROVIDER IN THE U.S.

## Why choose Qcells when going solar?

Long-term reliability, high quality standards, financial bankability and market recognition are important deciding factors to consider when selecting the right brand for your solar needs. Though there are many options in the industry today, place your trust in the market leader.



### No.1 market share



Market leader of residential (since 2018) and commercial (since 2019) solar module segments in the U.S.

### Tier 1 bankability



Tier 1 solar manufacturer backed by Hanwha Group, a Fortune Global 500 company and 7th largest conglomerate in South Korea.

### USA manufacturing



The only company to establish a fully-integrated silicon based solar supply chain from raw material to finished panel in the US with the largest solar module factory of its kind in operation in the Western Hemisphere.\*

\*Applies to certain products

### Recognized top brand



Qcells has been awarded the "Top Brand PV" seal by internationally recognized research institute EUPD for ten years running.

### Quality assurance



Strict quality testing standards that ensure outstanding durability and world class performance, proven by top global institutions PVEL and TÜV Rheinland.

### Best-in-class warranty



Double glass module design enables extended lifetime with 12-year product warranty and improved 30-year performance warranty.



**Warranty**  
Product



**Warranty**  
Performance

# Q.PEAK DUO **RSF** XL-G11S.3/BFG

Explore the cutting-edge technology of Qcells' steel frame solar module for C&I and utility projects



1

## FAST AND EASY INSTALLATION

- 3 fasteners only
- Notch-tab alignment feature
- 3 times faster installation than conventional module



2

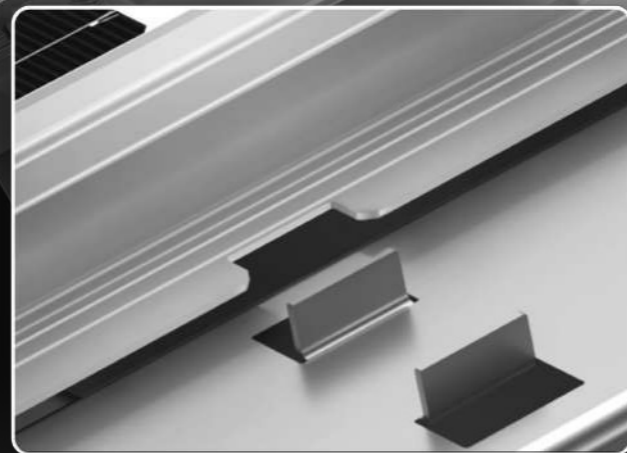
## IMPROVED DESIGN

- Enhanced bifaciality from unique frame design
- Improved mechanical load capacity
- Water drainage design

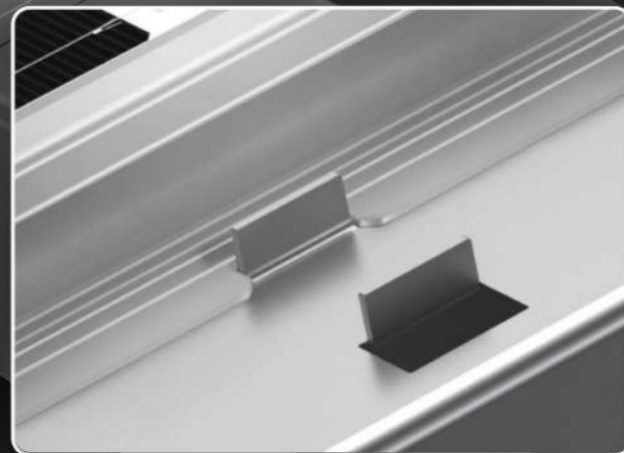
## Perfect fit between tracker and module

Preassembled clamps on the rail

Notch-tab alignment feature



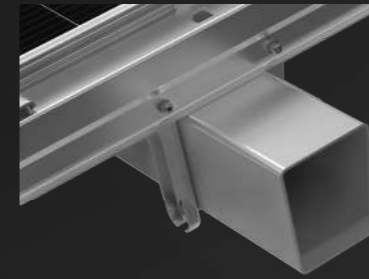
Before Installation



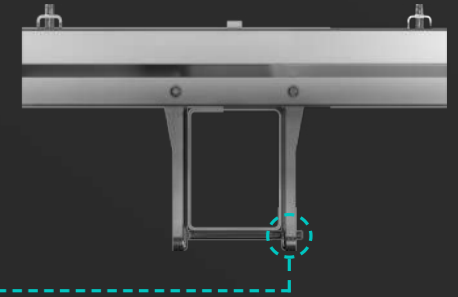
After Installation

## Fast and easy installation step by step

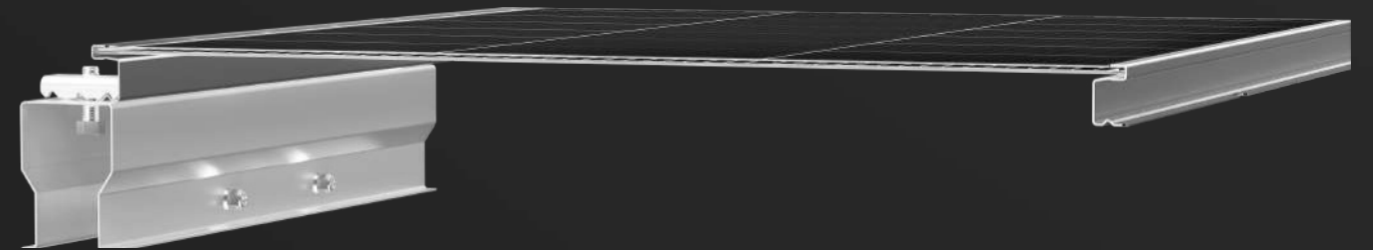
**Step 01** Fasten first rail clamp on torque tube



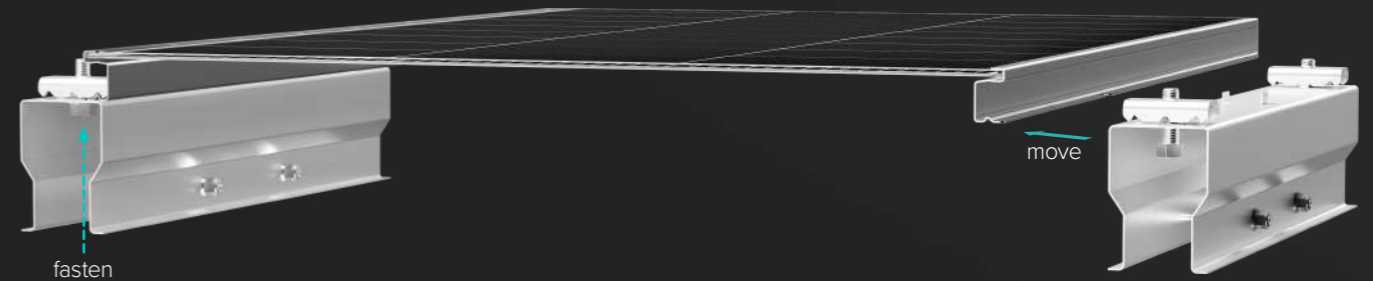
Foldable rail fastening integrated into each pre-assembled rail clamp (no additional parts needed)



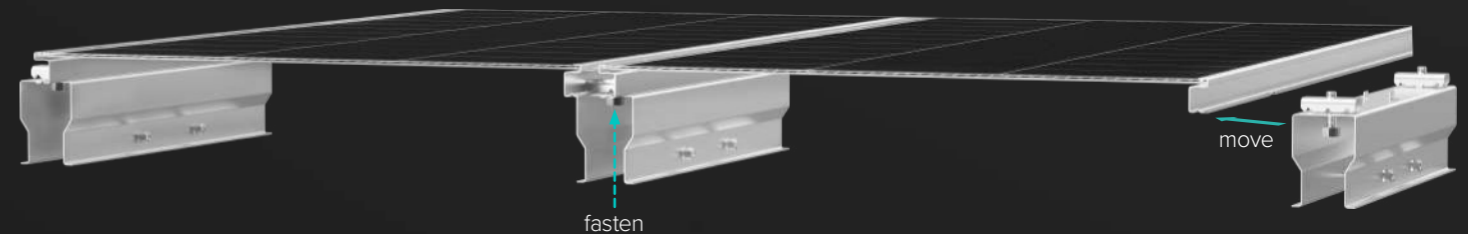
**Step 02** Place steel frame module on first rail clamp guided by notch-tab alignment feature



**Step 03** Fasten first module clamps and place second rail clamp guided by notch-tab alignment feature



**Step 04** Place next module, fasten clamps on one side and place next rail clamp



**Step 05** Repeat step 4 adding modules and clamps one by one – all guided by the notch-tab alignment feature for a fast and easy installation

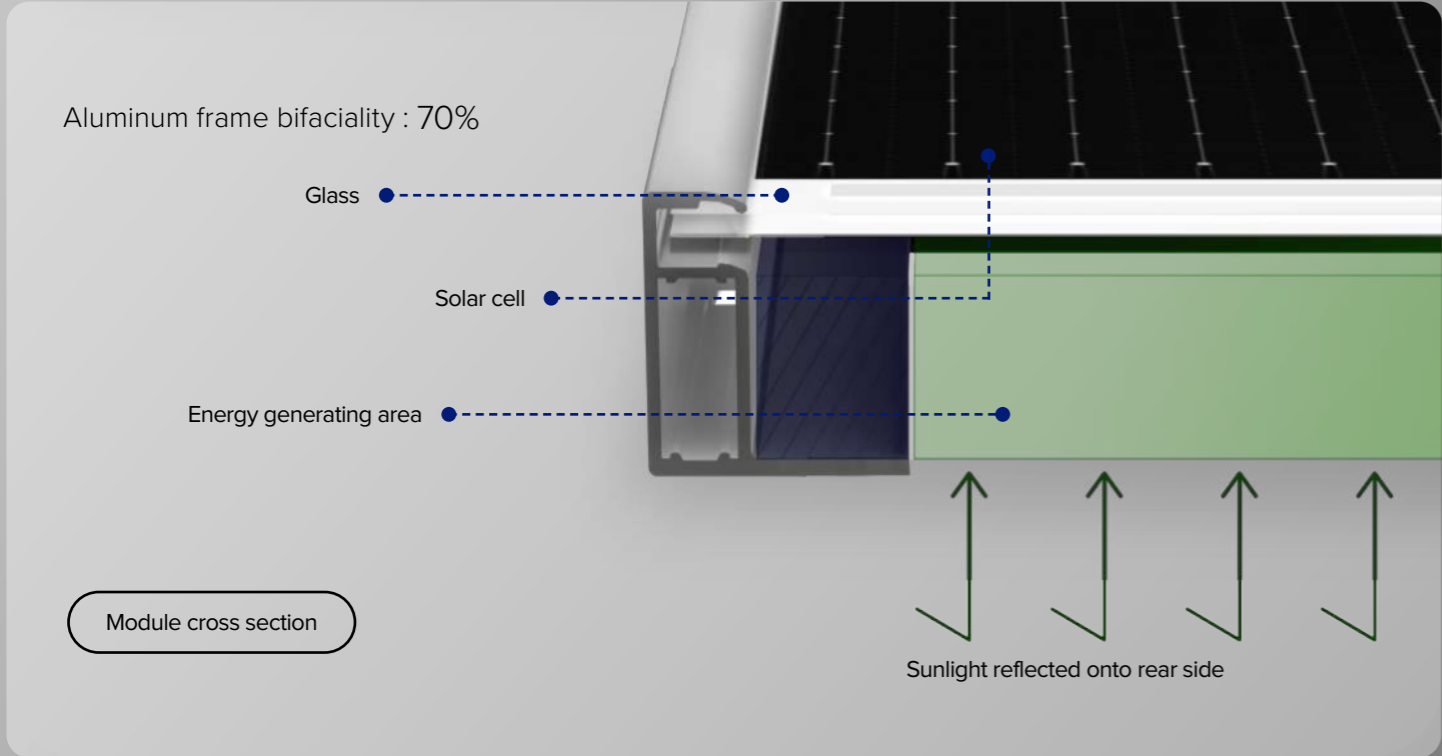
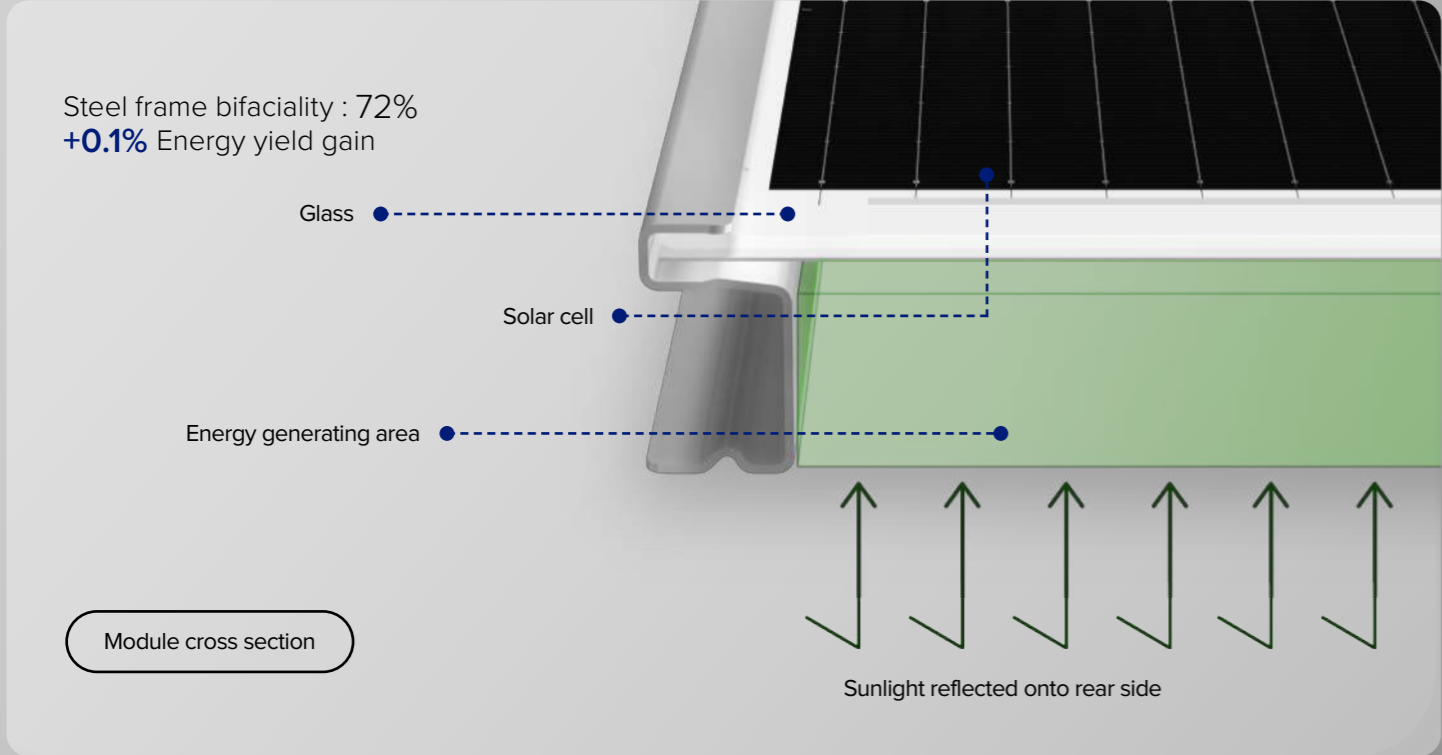
## FAST AND EASY INSTALLATION

Q.PEAK DUO RSF XL-G11S.3/BFG steel frame modules can be installed 3 times faster using Qcells' patented frame with optimized FlexRack's rail and clamp designs. Installers can easily find the center of the module and fix them on the tracker torque tube with 3 fasteners only. With Qcells' unique steel frame design, you can save time and money.

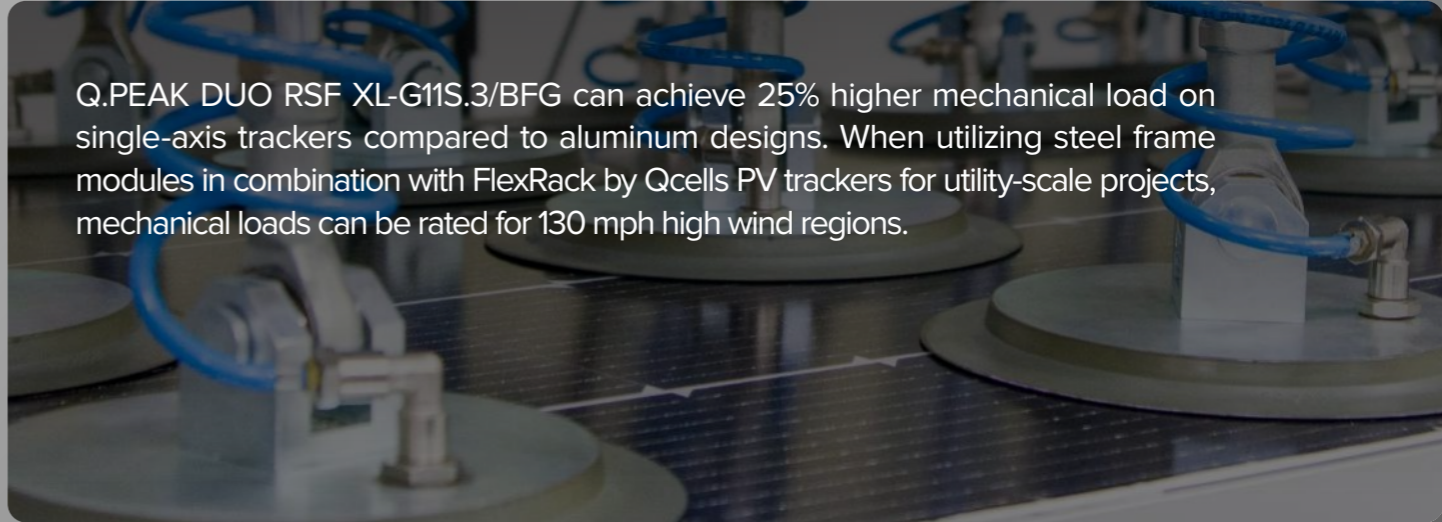
# IMPROVED DESIGN

"S" shape of steel frame with open frame structure enables additional energy yield gain and improved mechanical load capacity

## Enhanced bifaciality from unique frame design



## Improved mechanical load capacity



## Water drainage design

Opened frame joint of Q.PEAK DUO RSF XL-G11S.3/BFG can reduce dust and standing water from accumulating. The water drainage design can also prevent moss formation due to standing water.



# Q.PEAK DUO RSF XL-G11S.3/BFG

Reframe solar energy with steel frame modules by Qcells

## Specifications



Specification	Q.PEAK DUO RSF XL-G11S.3/BFG
Power Class	585Wp - 600Wp
Max Efficiency	21.5%
Format (including frame)	96.9 in × 44.6 in × 1.38 in (including frame) (2462 mm × 1134 mm × 35 mm)
Weight	80.2 lbs (36.4 kg)
Frame	Steel (Zn-Al-Mg coating)
Cell	6 × 26 monocrystalline Q.ANTUM solar half cells
Temperature Coefficient of P <sub>MPP</sub>	-0.34 %/K
Warranty	12-year product warranty & 30-year performance warranty

# Q.PEAK DUO RSF ML-G12S.3/BFG

Available from 2025

New type of steel frame module will be introduced for utility-scale projects soon.

## Specifications



Specification	Q.PEAK DUO RSF ML-G12S.3/BFG
Power Class	670Wp - 685Wp
Max Efficiency	22.1%
Format (including frame)	93.8 in × 51.3 in × 1.38 in (including frame) (2384 mm × 1303 mm × 35 mm)
Weight	89.3 lbs (40.5 kg)
Frame	Steel (Zn-Al-Mg coating)
Cell	6 × 22 monocrystalline Q.ANTUM solar half cells
Temperature Coefficient of P <sub>MPP</sub>	-0.34 %/K
Warranty	12-year product warranty & 30-year performance warranty

# Qcells